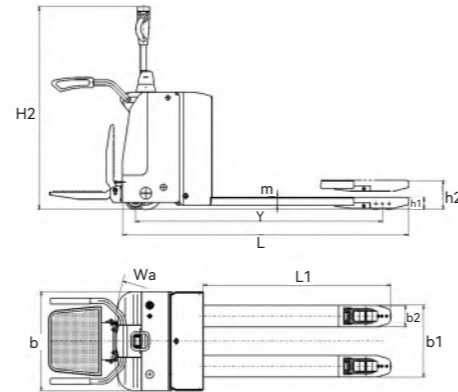


Electric Pallet Truck **CBD20E/25E/30E**

- ◆ Low noise, few vibration and excellent leak tightness, ensures smooth lifting.
- ◆ AC traveling motor, maintenance-free, provides stronger power and laden climbing ability.
- ◆ Has the function of automatic deceleration when turning.
- ◆ High-strength frame design, suitable for tough workplaces, ensures longer service life.
- ◆ Dual robust lifting cylinders, ensures stably lifting and lowering.
- ◆ The EASTPOWER unique suspension Driving Floating Adjustable system (DFA) design, ensures the truck less vibration, stable, no tilt while turning in high speed.
- ◆ Folded pedal, with buffering function, avoid shake while traveling.
- ◆ Humanized design of handrail, protect the operator when operating.
- ◆ Vertical motor designing, ensures inspection and maintenance of motor and brake system conveniently.
- ◆ Optional EPS electric power steering system, light and nimble operation.



CBD20E

Model	CBD20E	CBD25E	CBD30E
Load Capacity	(kg) 2000	2500	3000
Overall Length(Pedal Off/On)	(mm)	1893 / 2289	
Overall Width	(mm)	730	
Overall Height	(mm)	1390	
Min. Fork Height	(mm)	85	
Max. Fork Height	(mm)	205	
Fork Dimension	(mm)	1150×160×56	
Max. Fork Width	(mm)	530 / 680	
Turning Radius	(mm)	1725	
Driving Motor	(Kw)	1.6AC	
Lifting Motor	(Kw)	0.8	2.0
Battery	(V/Ah)	24 / 210	
Battery Weight	(kg)	185	
Net Weight(Without Battery)	(kg)	453	481
Net Weight with EPS(Without Battery)	(kg)	458	472

EPS is optional.

Semi-Electric / Electric Pallet Truck **BSTH / BSTD** series



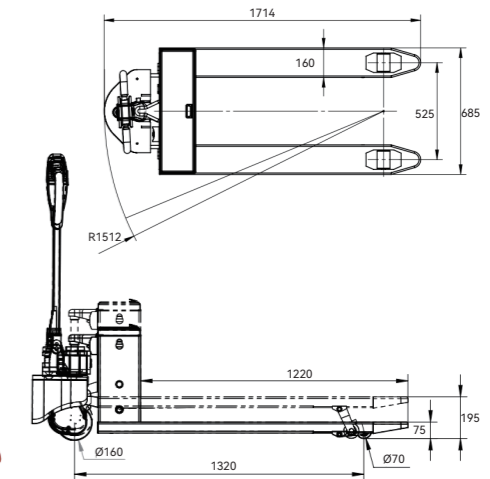
Option Handle



BSTH20



BSTD20



Model		BSTH20	BSTD20L-A
Rated Capacity	(kg)	2000	2000
Min. Fork Height	(mm)	85/75	85/75
Max. Fork Height	(mm)	205/195	205/195
Fork Length	(mm)	1220	1220
Fork Overall Width	(mm)	685	685
Turning Radius	(mm)	1512	1554
Single Fork Width	(mm)	160	160
Overall Height	(mm)	1276	1193.5
Overall Length	(mm)	1714	1749
Overall Width	(mm)	685	685
Front Roller	(mm)	Ø80×70	Ø70×93
Driving Wheel Dia.	(mm)	-	Ø160
Travelling Speed (Load / Unload)	(km/h)	-	4/4.5
Lifting Speed (full / no Load)	(m/s)	-	0.024/0.038
Rate of Decline (full / no Load)	(m/s)	-	0.034/0.025
Climbing Capacity (full / no Load)	Deg	-	8/16
Driving Motor	(kw)	-	1.0
Lifting Motor	(kw)	0.8	0.8
Brake		-	Electric-Magnetic
Battery	(V/Ah)	48V-DC/20	48V-DC/20
Type of Drive Control		Pedestrian	MOSFET Control
Sound Level at Driver's Ears	dB(A)	-	<70
Road Way Width with 1200x800	Ast (mm)	52×36/1300×900	52×36/1300×900
Weight of Whole Machine(including Battery)	(kg)	167	198
Battery Weight	(kg)	25	25
Load Max. axial Load of bearing Wheel (full / no Load)	(kg)	1480/740 100/50	1480/740 100/50
Max. axial Load of Wheel (full / no Load)	(kg)	600/98	600/98