

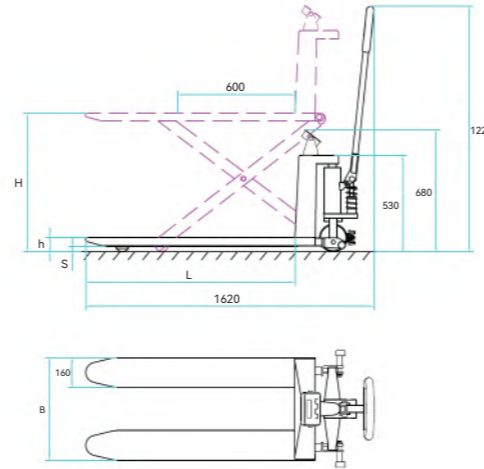
## High Lift Scissor Truck with Scale **JLS / JES** series

### Manual

- ◆ Extremely easy to pump and light make this unit very suitable as combined hand pallet truck and lift table.
- ◆ Front support legs and adjustable stabilizers extended to the floor automatically when the forks reach a height of 420mm, to ensure maximum stability and optimum braking.
- ◆ Ergonomic warm handle offers you simple and comfortable operation.
- ◆ Heavy duty design: 4mm steel plate fork frame and larger lift piston ensure the truck to reach rated capacity.
- ◆ Conforms to EN1757-4 and EN175.

### Electric

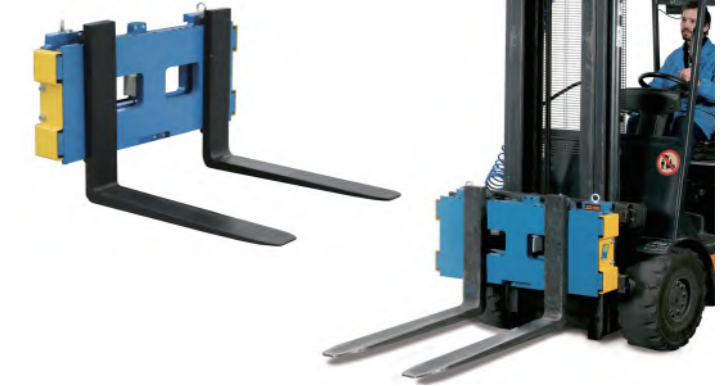
- ◆ Quick-lift as standard with automatic transfer to normal lifting with loads over 150kg.
- ◆ Automatic descending speed control by a uniquely hydraulic valve, the descending speed always keeps same regardless the truck with or without load. It will prevent cargo damage from fast descending.



Model	JL6801S	JL5210S	JE6810S	JE5210S
Type	Manual		Electric	
Capacity	(kg) 1000	1000	1000	1000
Max. Fork Height	H (mm) 800	800	800	800
Min. Fork Height	h (mm) 85±2	85±2	85±2	85±2
Fork Width	B (mm) 680	520	680	520
Fork Length	L (mm) 1190	1190	1190	1190
Ground Clearance	S (mm) 19.5	19.5	19.5	19.5
Front Load Roller	(mm) 75×50	75×50	75×50	75×50
Steering Wheel	(mm) 150×40	150×40	150×40	150×40
Pump Strokes to Max. Height	20/60	20/60	-	-
Without/with Rated Load				
Lifting Time, without/with Rated Load	(sec) -	-	10/17	10/17
Lifting Times with full Power	(sec) -	-	100	100
Battery	(Ah/V) -	-	54/12	54/12
Battery Charger	(V/A) -	-	12/9	12/9
Weighing Units	Kg/lb			
Division	0.1kg			
Stabilization Time	3 sec			
Power Supply	External AC adapter, 9V 800mA, built-in rechargeable battery (lead acid, 6V/2.gAh)			
Display	6-digit 0.56-inch 7-segment LED			
Accuracy	±5kg			
Operating Temperature	0~40°C / 32~104°F			
Net Weight (without Battery)	(kg)			

## Weighing System On Forkholder Plate **LTW** series

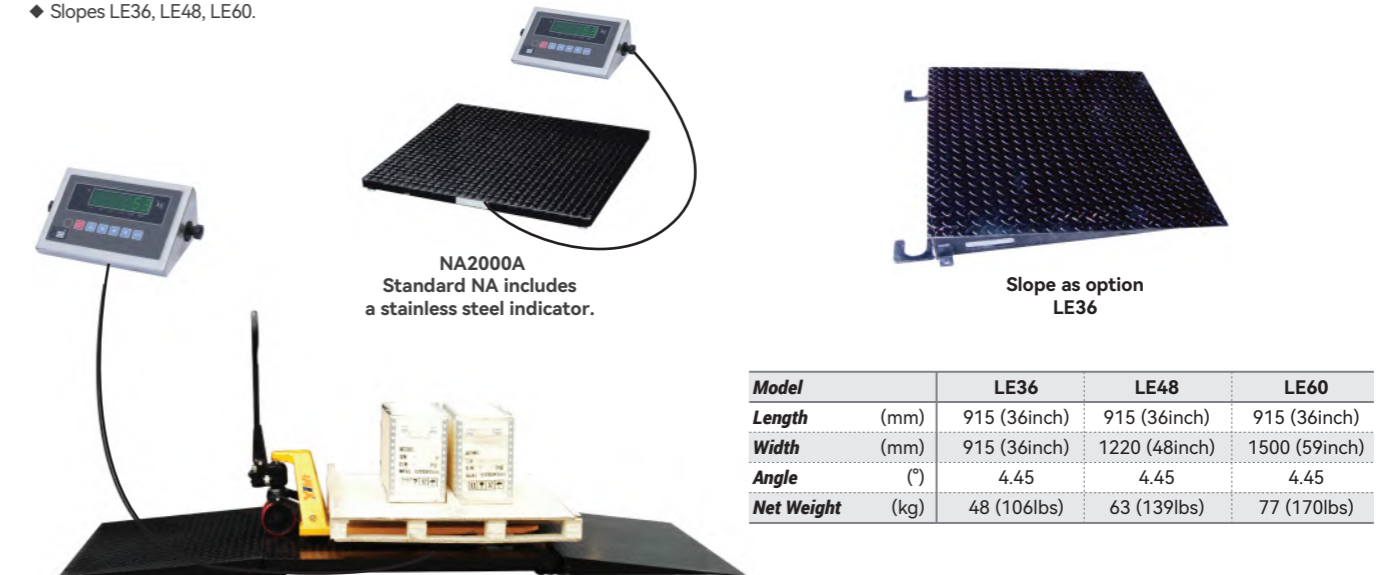
- ◆ Bearing structure in extra thick sheet steel and accurate functioning mechanics with 2 shear-beam IP68 load cells.
- ◆ Stainless steel load cells, full scale output 2 mV/v, maximum power supply 15Vdc.
- ◆ Hermetically sealed junction box.
- ◆ Accuracy: ±1-5% of the capacity.
- ◆ Max. horizontal inclination (flexibility): ±2° with the same accuracy characteristics.
- ◆ Max. allowable overload: more than 300% f.s., with protection limit switch in case of broken hinges.
- ◆ Max. barycentric shifting: 55mm.
- ◆ Built-in protection system against overloads and accidental impacts.
- ◆ Wide range of connectable indicator and wireless solutions.



Model	LTW15A	LTW25A
Max. Capacity	(kg) 600/1500	1500/2500
Display Accuracy	(kg) 0.2/0.5	0.5/1
Approved Division	(kg) 1/2	2/5

## Low Profile Floor Scale **NA** series

- ◆ Rugged steel diamond plate surface with heavy duty welded channel support.
- ◆ Overload protection to 150% of capacity, adjustable leveling feet, can be pit mounted or free standing.
- ◆ Four alloy tool steel potted load cells.
- ◆ Durable power coat finish, 6 digit 7 segment display, bi-directional RS232 port, and operator controls for Zero, Tare, Unit, net/gross and print. Converts to lb. or kg. readout.
- ◆ Deluxe stainless steel indicator as standard.
- ◆ Two slopes are optional equipments.
- ◆ Slopes LE36, LE48, LE60.



Model	LE36	LE48	LE60
Length	(mm) 915 (36inch)	915 (36inch)	915 (36inch)
Width	(mm) 915 (36inch)	1220 (48inch)	1500 (59inch)
Angle	(°) 4.45	4.45	4.45
Net Weight	(kg) 48 (106lbs)	63 (139lbs)	77 (170lbs)

Model	NA1000	NA2000A	NA2000B	NA5000A	NA5000B
Measuring Range	(kg) 1000	2000	2000	5000	5000
Indexing Accuracy	(kg) 0.2	0.5	0.5	1	1
Sensor Capacity	(kg) 1000	2000	2000	2500	2500
Sensor Number	4	4	4	4	4
Platform Size	(mm) 915x915	1220x1220	1500x1500	1220x1220	1500x1500
Height	(mm) 70	70	70	70	70
Net Weight	(kg) 75	145	230	160	312
Equipment Temperature	-10°C~+40°C relative temperature<95%				
Sensor Temperature	-20°C~+60°C				
Voltage	110V AC (-10%, +10%) 50 Hz				
Accuracy Class	3				