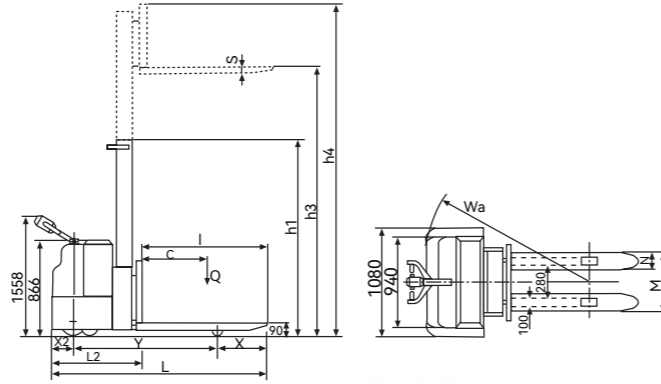


Full Electric Stacker FE / FE-AC series

DC/AC Driving System.

- ◆ Heavy duty design for tough application.
- ◆ Top quality electronic control system from Curtis.
- ◆ Powerful power pack and drive wheel are made in Europe.
- ◆ Drive unit with electromagnetic brake.
- ◆ Conforms to EN1757-1, EN1726.



◆ Platform and handrail is optional

◆ Straddle leg is optional

Model	FE1216	FE1516	FE1224	FE1524	FE1229	FE1529	FE1231	FE1531	FE1233	FE1533	
Model	FE1216AC	FE1516AC	FE1224AC	FE1524AC	FE1229AC	FE1529AC	FE1231AC	FE1531AC	FE1233AC	FE1533AC	
Capacity	(kg)	1200	1500	1200	1500	1200	1500	1200	1500	1500	
Lifting Height	h3 (mm)	1600	1600	2450	2450	2900	2900	3100	3100	3300	
Min. Fork Height	h (mm)	90									
Load Center	C (mm)	600									
Fork Length	I (mm)	1150									
Fork Width	M (mm)	540									
Travelling Speed		without Load 5.5 km/h, With Full Load 4.8 Km/h									
Lifting Speed		without Load 144 mm/s, With Full Load 95 mm/s									
Lowering Speed		without Load 150 mm/s, With Full Load 65 mm/s									
Motors Travelling	(KW/V)	1.2/24 (AC)									
Motors Lifting	(KW/V)	2.2/24									
Battery (service free)	(Ah/V)	200/24									
Battery Charger	(A/V)	20/24									
Front Roller	(mm)	Ø78×70									
Rear Roller	(mm)	Ø150×75									
Drive Wheel	(mm)	250×80									
Net Weight	(kg)	614	614	670	670	692	692	705	705	714	714
Dimension	X (mm)	460	460	460	460	460	460	460	460	460	460
	S (mm)	56	56	56	56	56	56	56	56	56	56
	X2 (mm)	200	200	200	200	200	200	200	200	200	200
	Y (mm)	1270	1270	1270	1270	1270	1270	1270	1270	1270	1270
	L2 (mm)	780	780	780	780	780	780	780	780	780	780
	L (mm)	1930	1930	1930	1930	1930	1930	1930	1930	1930	1930
	N (mm)	160	160	160	160	160	160	160	160	160	160
	h1 (mm)	2090	2090	1800	1800	2025	2025	2125	2125	2225	2225
	h4 (mm)	2244	2244	3094	3094	3544	3544	3744	3744	3944	3944
	B (mm)	940	940	940	940	940	940	1080	1080	1080	1080
	Wa (mm)	1525	1525	1525	1525	1525	1525	1540	1540	1540	1540

Option: Traction Battery (240Ah/24V).

Full Electric Stacker FK / BK / BKW series

- ◆ Heavy duty design with top quality mast construction.
- ◆ Powerful drive wheel and power unit made in Europe.
- ◆ Top quality electronic control system from Curtis.
- ◆ Conforms to EN1757-1, EN 1726.

Option



Ergonomic Tiller
Made in Germany

Frei



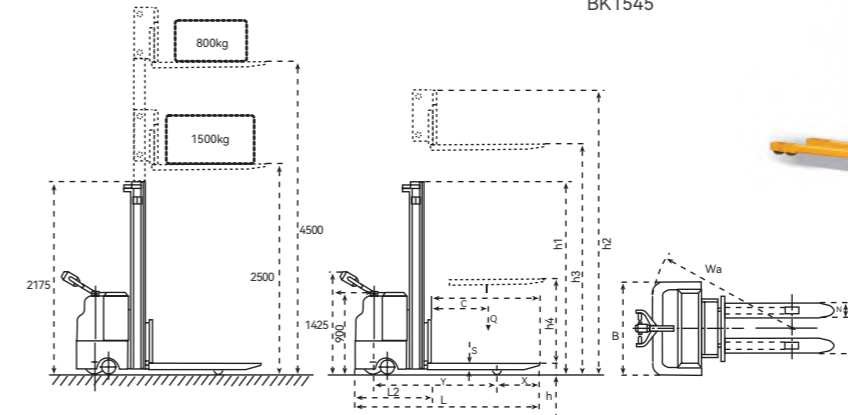
BK1545



FK1545



BKW1555 (straddle leg)



Model	FK1545	BK1545	BKW1555	
Type	Standard	Platform	Platform	
Capacity	(kg)	1500	1500	1500
Load Center	(mm)	600	600	600
Max. Fork Height	(mm)	4500	4500	5500
Lowered Fork Height	(mm)	90	90	90
Full Free Lifting Height	(mm)	1550	1550	1717
Fork Length	(mm)	1150	1150	1000
Fork Overall Width	(mm)	560	560	200-950
Fork Individual Width	(mm)	160	160	160
Travelling Speed (with / without load)	(km/h)	5.2/6.8	5.2/6.8	5.2/6.8
Lifting Speed (with / without load)	(mm/s)	127/170	127/170	127/170
Lowering Speed	(mm/s)	150/128	150/128	127/170
Motors Travelling	(W)	1200	1200	1200
Motors Lifting	(W)	3000	3000	3000
Front Roller, Tandem	(mm)	Ø78×70	Ø78×70	Ø78×70
Rear Roller	(mm)	Ø150×50	Ø150×50	Ø150×50
Driver Wheel	(mm)	Ø250×80	Ø250×80	Ø250×80
Traction Battery	(Ah/V)	240/24	240/24	240/24
Battery Charger	(A/V)	30/24	30/24	30/24
Weight of Battery	(kg)	230	230	230
Overall Dimensions	(mm)	2013×1080×2175	2507×1080×2175	2507×940×2175
Net Weight (without battery)	(kg)	1010	1035	1370