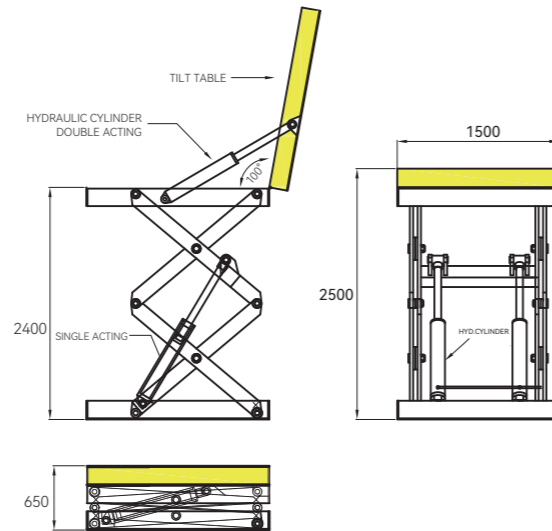


Tilt Lift Table **THW** series

- ◆ Heavy-duty electrohydraulic tables with capacity of 1000 to 3000kg.
- ◆ Angle of tilt to 90degrees with different platform size.
- ◆ Tilting & lifting Platform with safety alu. bar.
- ◆ With baffle plate.

Note: These lift tables tilt as the platform is raised.
They do not allow independent control of Lift and/or Tilt.



Model		THW1001	THW1002	THW2001	THW3001
Capacity	(kg)	1000	1000	2000	3000
Platform Size	(mm)	1220×610	1300×820	1300×850	1700×1200
Tilting Platform Size	(mm)	1190×570	1260×780	1260×800	1660×1150
Lifting-Tilting Table Height	(mm)	205~250	205~250	230~250	240~250
Lifting Speed	(mm/s)	15~20	18~25	25~30	30~40
Motor	(kw)	1.5	1.5	2.2	2.2
Weight	(kg)	310	330	380	520

Electric Rotary Platform **ERP** series

- ◆ Operated by foot pedal switch, Very convenient to operate.
- ◆ With forklift fork pockets, it can be easy moved by forklift.



Model		ERP2000	ERP2000/P
Capacity	(kg)	2000	2000
Dia. of the Platform	(mm)	Ø1220	Ø1220
Min. Platform Height	(mm)	306	306
Speed	(r/min)	8	0-12
Motor	(KW)	1.1	1.1
Wheel Dia.	(mm)	Ø250	Ø250
Fork Pocket	(mm)	178×54	178×54
Net Weight	(kg)	234	236

Electric Roller Lift Table **HWR** series

- ◆ Electro-hydraulic lift, table with motorized rollers, manual translation on rails.
- ◆ Motorized rollers with chain's transmission.
- ◆ Push button attached to the structure with commands up/down, start and emergency + forward and stop of the rollers.
- ◆ Sensor for max height adjustable and shift along the platform length.



Model		HWR
Capacity	(kg)	1500
Platform Size	(mm)	2500×800
Lowered Height	(mm)	250
Raised Height	(mm)	10000
Power Pack		3-380V/50Hz 2.2kw
Roller Width	(mm)	700
Roller Pitch	(mm)	200
Roller Dia.	(mm)	Ø60
Roller Q'tity		21
Speed	(mm/s)	80~100
Lifting Time		20s/750mm