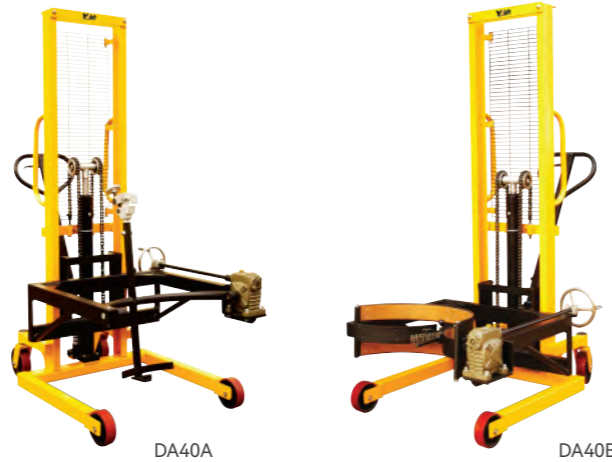


Drum Stacker DA40A/B

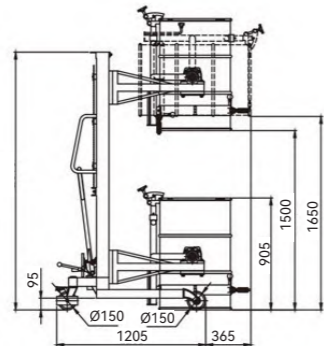
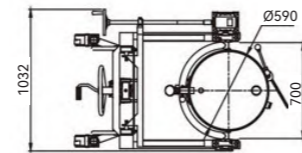
- ◆ Easy to lift, transport and tilt 55 gallon drum.
- ◆ Available to carry the drum to rack (lower than 1350mm).
- ◆ Tilt the drum 120° for oil empty.
- ◆ Compact and reliable mechanism system to fix drum.
- ◆ It can lock a drum in vertical position to avoid spills or horizontal.
- ◆ Position for draining through a faucet.
- ◆ Easily lift with pedal when unload.



Model	DA40A	DA40B
Capacity (kg)	400	400
Drum Size	572mm (22.5" Diameter), 210Liters (55 gallon)	
Lifting Height (mm)	1350	1350
Rear Castor DxW (mm)	Ø180×50	Ø180×50
Net Weight (kg)	190	190

Semi-Electric Drum Stacker DA450 series

- ◆ Suitable for 55 gallon steel drums and 200L closed plastic drums.
- ◆ By manually rotating the drum 180 degrees, the drum can be maintained at any angle.
- ◆ Electronic weighing is optional.



Model	DA450	DA450-1
Load Capacity (kg)	450	450
Lifting Height (mm)	1500	1500
Wheel (mm)	Ø150×50	
Net Weight (kg)	184	194

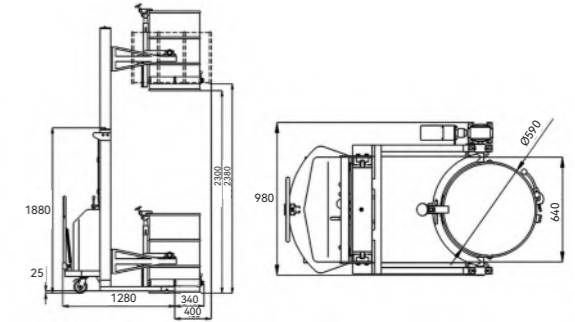
DA450-1

DA450

Semi-Electric Drum Stacker DA450E series

2300mm Lifting Height Drum Rotator With Two Stages

- ◆ Load capacity 450kg.
- ◆ High quality hydraulic power unit & maintenance-free battery.
- ◆ Anchor ear is for steel drums & plastic drums; Eagle-grip structure for steel drums.
- ◆ Applicable to transport, stack, pour and other use for liquid, such as chemical, food workshop, dyes, coatings, adhesives, oil, cooking oil and so on;
- ◆ Combined Eagle-grip and Anchor ear structure, drums can be electric lifted & rotated 180 degree.
- ◆ DA450E-2: Kinds of scale can be chosen, accuracy up to +3%.



Model	DA450E-1	DA450E-2
Load Capacity (kg)	450	450
Lifting Height (mm)	1500	2300
Lifting Speed (mm/s)	120	120
Turning Radius (mm)	1620	1620
Wheels (mm)	Ø80×55 / Ø150×50	
Pump (Kw/h)	1.6	
Battery (V/Ah)	12/120	
Remark	Electrical Lifting+rotating	Electrical Lifting+rotating,with scale
Rotating Degree (°)	175	175
Net Weight (kg)	354	382

Semi-Electric Drum Lift Truck DT500

- ◆ Load capacity 500kg;
- ◆ Eagle-grip structure is suitable for transporting & lifting the upright drums and barrels quickly.
- ◆ Special rolling technology of C-type frame has a strong security.
- ◆ Optional Single (Double) Gator Grip grabs.

Model	DT500
Load Capacity (kg)	500
Lifting Height (mm)	1450
Lifting Speed (mm/s)	120
Turning Radius (mm)	1430
Wheels (mm)	Ø80×55 / Ø150×50
Pump (Kw/h)	1.6
Battery (V/Ah)	12/120
Remark	Electrical Lifting
Net Weight (kg)	226

