

Scissor Lift Cable Drum Stand **SL** series

- ◆ Manoeuvrable and transportable.
- ◆ Designed for rugged use.
- ◆ Well suited for uneven ground as the individual lifting screws can be adjusted separately.
- ◆ Sealed directional bearings (insert) aid the ease of lifting and lowering of cable drums.
- ◆ Two stands with wheels for transportation, and placement collars to retain drums and a ground joining bar for rigidity during operation.
- ◆ Stamped and registered load bearing axle.
- ◆ Winding via spin handle.



SL30

Model	SL05	SL10	SL30
Capacity (kg)	500	1000	3000
Useable Drum Axle Length (mm)	1000	1700	2000
Drum Axle Dimensions(Dia.xL) (mm)	50×1500	60×2300	90×2300
Joining Bar Dimendions (mm)	Not Supplied	60×2300	90×2300
Max. Drum Dia. (mm)	1200	1600	2600
Overall Length (mm)	1000	1380	1780
Width (mm)	200	400	400
Max. Angle (°)	55	55	60
Max. Height (mm)	670	925	1330
Dimensions(Carton On Pallet) (mm)	1000×200×150	1400×710×370	1850×500×550
Dimensions(Skid With Axles) (mm)	2300×150×120	2500×180×150	2500×200×180
Net Weight(Carton On Pallet) (kg)	38	90	120
Net Weight(Skid With Axles) (kg)	30	40	50

Wire Reel Bracket **WRB** series



WRB680

WRB1000

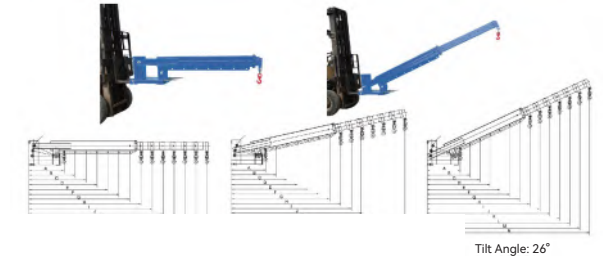
WRB1360

WRB2000

Model	WRB680	WRB1000	WRB1360	WRB2000
Capacity (kg)	680	1000	1360	2000
Type	Single Reel	Single Reel	Single Reel	Single Reel
Material	Steel	Steel	Steel	Steel
Height (mm)	102	-	102	-
Depth (mm)	711.2	Connect Bar-Adjustable	711.2	Connect Bar-Adjustable
Width (mm)	787.5	-	1321	-
Wire Reel Dia. (mm)	-	Ø300-1000	-	Ø1000-1500
Wire Reel Width (mm)	-	300-750	-	300-800
Net Weight (kg)	33	31	52	33.5

Telescopic Fork Mounted Jibs **TLB** series

- ◆ Convert a forklift truck into a mobile crane to reach and transport long and awkward loads from inaccessible location.
- ◆ Verify load centre of forklift truck.
- ◆ Safety chain welded to boom has grab hools for anchoring jib boom to forklift truck.
- ◆ Zinc plated fork heels pin for safe forklift attachment.
- ◆ Supplied complete with one safety swived hook with bow shackle and one rigid hook.



Tilt Angle: 26°

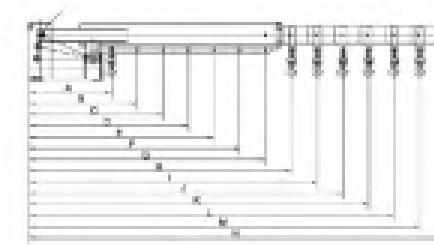


TLB03

Model	TLB03												
Positions (mm)	A	B	C	D	E	F	G	H	I	J	K	L	M
Capacity (kg)	755	985	1215	1445	1675	1905	2125	2355	2580	2810	3040	3270	3500
Fork Opening (mm)	464												
Fork Pockets (mm)	180×60												
Overall Size (mm)	2168×660×324												
Packing Size (mm)	2180×680×444												
Net Weight (kg)	188												



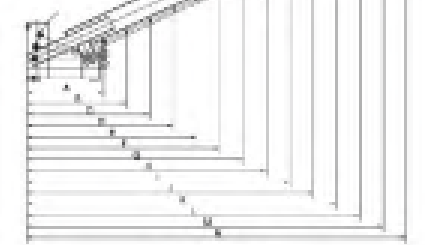
TLB01



Tilt Angle: 0°



Tilt Angle: 13°



Tilt Angle: 26°

Model	TLB01													
Positions (mm)	A	B	C	D	E	F	G	H	I	J	K	L	M	N
0° Capacity (kg)	740	969	1198	1427	1656	1885	2114	2352	2581	2810	3039	3268	3497	3726
13° Capacity (kg)	718	942	1156	1389	1612	1836	2060	2292	2516	2739	2963	3186	3410	3633
26° Capacity (kg)	690	897	1105	1312	1520	1727	1935	2150	2358	2566	2772	2980	3188	3395
Fork Opening (mm)	346													
Fork Pockets (mm)	180×74													
Overall Size (mm)	2322×542×512													
Packing Size (mm)	2340×560×630													
Net Weight (kg)	240													