

Horizontal Telescopic Fork Mounted Jibs TLB02

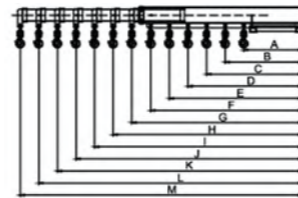
- ◆ Convert a forklift truck into a mobile crane to reach and transport long and awkward loads from inaccessible location.
- ◆ Verify lead center of forklift truck.
- ◆ With two locking screw and safety heavy chains to ensure fork not to shift or slip.
- ◆ Applicable fork sectional size ≤180×60mm(W×T).
- ◆ Supplied complete with one safety swivel hook with bow shackle & one rigid hook.



TLB02



TLB02



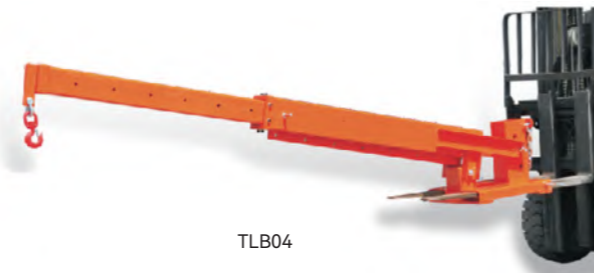
Model TLB02	A	B	C	D	E	F	G	H	I	J	K	L	M
Length Positions (mm)	730	960	1180	1420	1650	1880	2115	2345	2575	2805	3035	3265	3495
Capacity (kg)	3000	2280	1840	1542	1327	1164	1035	933	850	780	721	670	626
Fork Opening (mm)	284												
Fork Pockets (mm)	180×60												
Overall Size (mm)	2150×660×325												
Net Weight (kg)	188												

Dip-angle Telescopic Fork Mounted Jibs TLB04

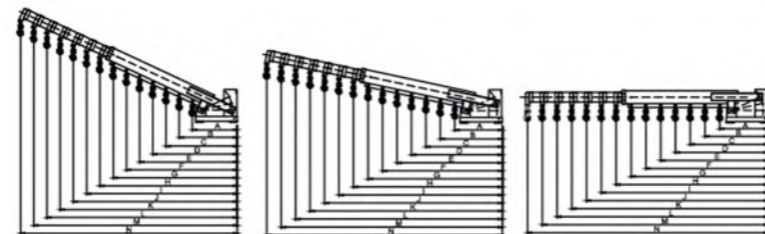
- ◆ Convert a forklift truck into a mobile crane to reach and transport long and awkward loads from inaccessible location.
- ◆ Adjustable three dip-angle positions--0°, 13° and 26°.
- ◆ Verify load center of forklift truck.
- ◆ With two locking screw and safety heavy chains to ensure fork not to shift or slip.
- ◆ Supplied complete with one safety swivel hook with bow shackle & one rigid hook.



TLB04



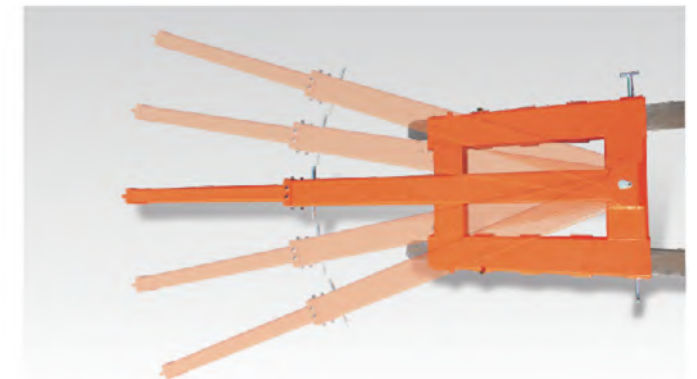
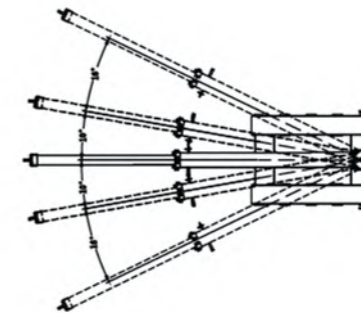
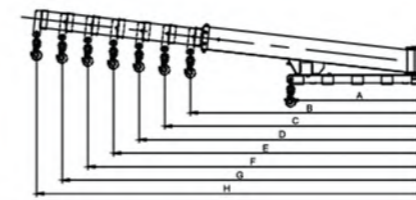
TLB04



Model TLB04	A	B	C	D	E	F	G	H	I	J	K	L	M	N	
0°	Length Positions (mm)	760	990	1220	1450	1680	1910	2140	2375	2605	2835	3065	3295	3525	3755
	Capacity (kg)	3000	2303	1869	1572	1357	1194	1065	960	875	804	744	692	647	607
13°	Length Positions (mm)	740	965	1190	1415	1640	1865	2090	2319	2544	2769	2994	3219	3444	3669
	Capacity (kg)	3081	2363	1916	1611	1390	1223	1091	983	896	823	762	708	662	621
26°	Length Positions (mm)	710	919	1127	1336	1544	1752	1961	2174	2382	2591	2799	3007	3215	3424
	Capacity (kg)	3211	2481	2023	1707	1477	1301	1163	1049	957	880	815	758	709	666
Fork opening (mm)	166														
Fork pocket (mm)	180×74														
Overall size (L×W×H) (mm)	2410×540×525														
Net Weight (kg)	240														

Dip-angle Telescopic rotatable fork mounted Jibs TLB05

- ◆ The lifting arm can adjust different rotation Angle in 5 different holes The hook is rotatable with a safety latch.
- ◆ With two locking screw and safety heavy chains to ensure fork not to shift or slip;
- ◆ The adjustable telescopic super long lifting arm is suitable for the area where the forklift is not easy to enter for operation especially suitable for lifting long strip goods in containers with forklift.



TLB05

Model TLB05	A	B	C	D	E	F	G	H
Length Positions (mm)	1195	2090	2319	2548	2778	3005	3233	3462
Capacity (kg)	2000	1144	1031	938	851	795	739	590
Fork Opening (mm)	515							
Fork Pockets (mm)	180×65							
Overall Size (mm)	2100×910×500							
Net Weight (kg)	238							