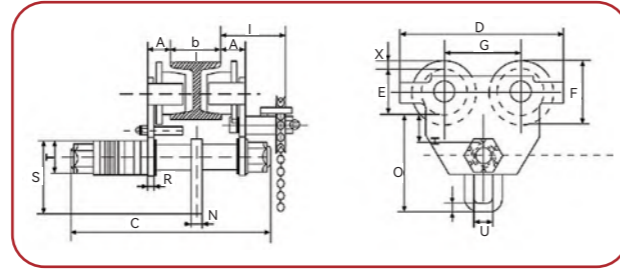


Geared Trolley HGT series

Professional class

- ◆ Double sealed ball bearings.
- ◆ Built-in bumper guards.
- ◆ Adjustable to fit various sizes of flange and i-beams.
- ◆ Use on straight or curved track.
- ◆ Can be installed or removed at any point along the track.
- ◆ Conforms to CE safety standard.
- ◆ Conforms to ANSI/ASME safety standard.



Model		HGT05	HGT10	HGT20	HGT30	HGT50	HGT100	HGT200
Capacity	(kg)	500	1000	2000	3000	5000	10000	20000
Beam Flange Width	b (mm)	64-140	64-140	76-165	76-203	88-203	125-203	144-203
Dimensions (mm)	O	128	143	172	212	254	320	385
	A	22	25	27	31	36	46	68
	B	∅ 24	30	36	42	48	60	60
	C	230	254	294	344	360	403	475
	D	212	255	302	344	378	445	642
	E	∅ 58	75	90	110	122	151	200
	F	82	102	122	142	156	188	274
	G	102	118	137	157	172	200	300
	H	28	25	27	32	34	35	55
	T	∅ 44	50	60	78	90	94	94
	R	6	8	10	12	16	25	30
	S	95	118	145	180	220	285	302
	L	15	15	20	26	35	45	70
X	12	13.5	16	16	17	18	37	
P	26	28	34	38	44	48	60	
N	10	12	14	16	20	25	35	
U	24	30.5	36	45	60	82	110	
I	113.5	112.5	112.5	135	136	160	151.5	
Net Weight	(kg)	14	19	28	40	65	103	245

Warning: Don't use in explosive environment.

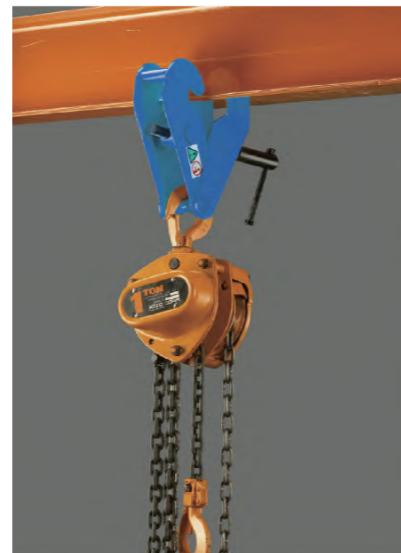
Note: Customer's specification or OEM is acceptable.

Beam Clamp YC series

- ◆ Provides a quick and versatile rigging point for hoisting equipment, pulley blocks or loads.
- ◆ Flexible application due to wide adjustment range.
- ◆ The central threaded spindle allows easy attachment and a safe and secure grip.
- ◆ The spindle can be secured against loosening.
- ◆ Option: Small dimensions for applications at beams with a low base height.



YC10



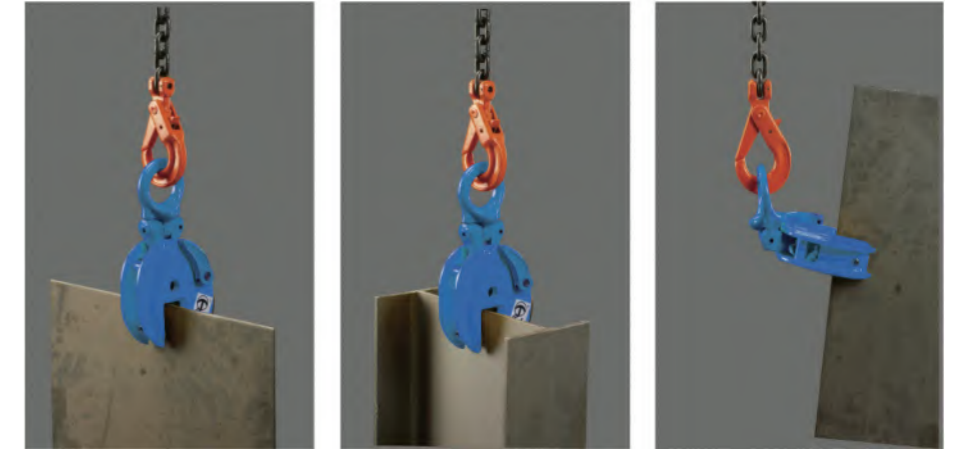
Model		YC10	YC20	YC30	YC50	YC100
Work Load Limit	(kg)	1000	2000	3000	5000	10000
Jaw Opening	(mm)	75-220	75-220	80-320	80-320	90-320
Weight	(kg)	3.8	4.6	9	11	16

Vertical Plate Clamp (lock lever type) CD series

- ◆ For lifting and transporting of steel plates and structures from all positions (horizontal vertical and sidelong).
- ◆ Articulated lifting shackle (CD type).
- ◆ Clamps are equipped with a safety mechanism, ensuring the clamp does not slip when lifting force is applied and when load is being lowered.
- ◆ The clamp is locked in closed as well as in open position.
- ◆ Manufactured from high quality carbon steel.
- ◆ Meets ASME B30.20.



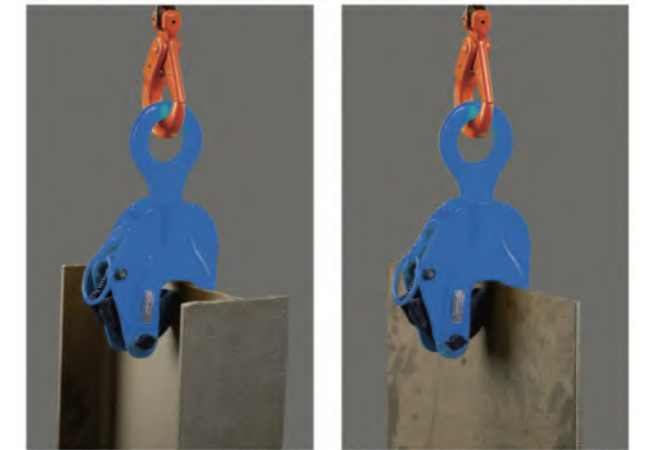
CD



Model		CD08	CD10	CD10(B)	CD16	CD20	CD32	CD32(B)	CD50	CD50(B)	CD80	CD120	CD160
Work Load Limit	(kg)	800	1000	1000	1600	2000	3200	3200	5000	5000	8000	12000	16000
Jaw Opening	(mm)	0-15	0-15	0-20	0-20	0-25	0-25	0-30	0-30	0-50	0-45	50-90	60-100
Weight	(kg)	2	4	5	7	8	15	15	21	23	37	50	65

Vertical Plate Clamp (lock handle type) CDH series

- ◆ Standard design clamp for vertical lifting of steel plates and steel structures. The spring-loaded tightening lock mechanism assures a positive initial clamping force.
- ◆ Clamps are equipped with a safety mechanism, ensuring the clamp does not slip when lifting force is applied and when load is being lowered.
- ◆ The clamp is locked in closed as well as in open position.
- ◆ Manufactured from high quality carbon steel.
- ◆ High-frequency quenching of die-forged special alloy steels gives greater durability to the cam.
- ◆ Meets ASME B30.20.



Model		CDH08	CDH10	CDH20	CDH32	CDH50	CDH80	CDH100	CDH120	CD160
Work Load Limit	(kg)	800	1000	2000	3200	5000	8000	10000	12000	16000
Jaw Opening	(mm)	0-16	0-22	0-30	0-40	0-50	0-60	0-80	25-90	60-125
Weight	(kg)	2.8	3.6	5.5	10	17	26	32	48	80